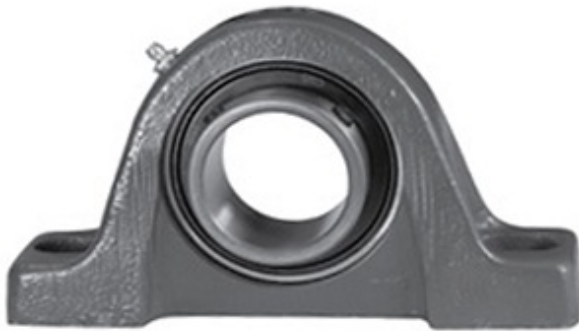




NTN Bearing Brazil Bearings Ltda.

2.25 Inch | 57.15 Millimeter x 1.891 Inch | 48.031 Millimeter x 2.75 Inch | 69.85 Millimeter LINK BELT P3S236E Pillow Block Bearings



Bearing No. P3S236E

P3S236E Bearing 2D drawings and 3D CAD models

Category	Pillow Block Bearings
Inventory	0.0
Manufacturer Name	REXNORD
Minimum Buy Quantity	N/A
Weight	4.594
EAN	0662864011334
Product Group	M06110
Number of Mounting Holes	2
Mounting Method	Set Screw
Housing Style	2 Bolt Pillow Block
Rolling Element	Ball Bearing
Housing Material	Cast Iron
Expansion / Non-expansion	Non-expansion
Mounting Bolts	5/8 Inch
Relubricatable	Yes
Insert Part Number	MB252-14L-PA
Seals	Single Lip Contact
Housing Configuration	1 Piece Solid
Inch - Metric	Inch
Other Features	Single Row Standard Duty Has Flinger
Long Description	2 Bolt Pillow Block; 2-1/4" Bore; 2-3/4" Base to Center Height; Set Screw Mount; Ball Bearing; 6-29/32" Minimum Bolt Spacing;



NTN Bearing Brazil Bearings Ltda.

	8-5/32" Bolt Spacing Maximum; Relubricatable; Cast Iro
Category	Pillow Block
UNSPSC	31171511
Harmonized Tariff Code	8483.20.40.40
Noun	Bearing
Keyword String	Pillow Block
Manufacturer URL	http://www.rexnord.com
Manufacturer Item Number	C252-14L
Manufacturer Internal Number	5804276
Weight / LBS	10.12
D	1.891 Inch 48.031 Millimeter
d	2.25 Inch 57.15 Millimeter
Bolt Spacing Minimum	6.906 Inch 175.412Millimeter
Nominal Bolt Center to Center	7.3 Inch 184 Millimeter
Bolt Spacing Maximum	8.156 Inch 207.162Millimeter
B	2.75 Inch 69.85 Millimeter
Actual Bolt Center to Center	0 Inch 0Millimeter